



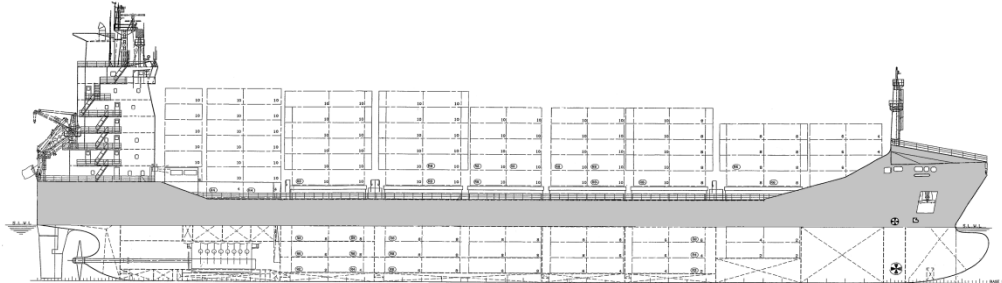
## MV "Rachel Borchard"

Gearless cellular container vessel

Class: GL +100 A5 "Containership" IW NAV-O SOLAS-II-2, Reg. 19 + MC AUT

Built 2000 at Hanjin Heavy Industries & Construction Co. Ltd. (No.644)

IMO No. 9212010



### Main Dimensions

Length over all	158,70 m
Length between perpendiculars	150,00 m
Breath moulded	25,60 m
Depth to main deck	13,70 m
Design draft	9,00 m
Summer draft	9,20 m
Deadweight	15315 t
Gross Tonnage	14278
Net Tonnage	4914

(according to Class Certificate)

### Main Engine

Wärtsilä NSD Sulzer 8RTA 62U (2 stroke), 17760 kW at 113 rpm  
Equipped with Slow Steaming Kit

### Auxiliaries

3 MAN B&W 7 L23/30H, 1050 kW at 900 RPM  
1 Emergency Diesel Volvo Penta TAMD71 B-RC, 156 kVA

### Speed

range about 13kn to 21,5kn

### Tank Capacity

HFO 1745 m<sup>3</sup>, MDO 148,3 m<sup>3</sup>, Ballast 5810 m<sup>3</sup> (all about)

### Communication

Inmarsat Standard C – Telex, Data  
Inmarsat Fleet 7 Broadband - Phone, Fax, Data  
Iridium Open Port – Phone, Data  
GMDSS fitted

### Nautical Aids

Magnetic compass, Gyro, HCS, GPS, RDX, RDS, ARPA, ECDIS, AIS,  
VDR, LOG, ES, STGTEL, DSL, LRIT, BNWAS  
(according to Class Certificate)

### Other outfit

Bowthruster Kawasaki 900 kW electrically driven,  
2 combined windlass / self-tensioning mooring winches  
2 self-tensioning mooring winches  
1 fixed pitch propeller

### Container intake

Subject to vessel's stability / trim / permissible weight

Deck	818 units 20'	or 372 unit's 40' + 74 units 20'
Holds	398 units 20'	or 188 unit's 40' + 22 units 20'
Total	1216 units 20'	or 560 unit's 40' + 96 units 20'

### Stability

Homogenously loaded with containers of 14 t each with center of gravity at 45% of container height / IMO stability criteria  
790 TEU

### Container fittings

In holds fixed cell guides for 40' containers which alternatively can be used for two containers. All restraint devices and necessary loose securing / lashing material for stowage of 20' containers are on board.

On deck vessel is equipped with fixed restraint devices and necessary loose securing / lashing material for a full load up to and including 6<sup>th</sup> tier.

45' and 48' containers can be carried on deck hatch covers No. 2, No. 3, No. 6 and No. 7 from 2<sup>nd</sup> tier except side-end container loaded from third tier. 48' containers should be carried on every other bay. Stowage 142 unit's 45' + 230 unit's 40' + 74 unit's 20'

### Permissible Stack weights

Hold Tank Top	120 t / 150 t	per 20' / 40' stack
Hatch Cover	60 t / 90 t	per 20' / 40' 45' 48' stack

Distribution of containers weights within a single 20'/40' stack to comply with the Cargo Securing Manual approved by Class Society.

### Hatches

7 hatches / 5 holds covered by 13 steel pontoons consist of two independent panels PS & SB except hatch No. 1 (one panel). All pontoons can be worked independently without sequence.

### Reefersockets

200 reefer sockets including 100 in holds  
450 V, 32A, 60 Hz, 3 phases